

# Schedule 1

## Item 1 Description of Agreement Area

### A. External boundary description

The agreement area covers all the land and waters within Lot 10 on BL58 (Frankfield Pastoral Holding) located within the external boundary of the QUD6230/98 Jangga People (QC98/10) Native Title Determination Application, as accepted for registration on 19 October 2004, being an area of Lot 10 on BL58 north of a line defined as:

Commencing at a point at Longitude 147.237595° East Latitude 22.180103° South, being a point on the southern boundary of the QUD6230/98 Jangga People (QC98/10) Native Title Determination Application and extending generally westerly along that native title determination application boundary passing through the following coordinate points:

Longitude ° (East)	Latitude ° (South)
147.215831	22.179896
147.191884	22.178788
147.169839	22.177726
147.146232	22.175768
147.124490	22.173826
147.101217	22.171442
147.079166	22.168191
147.055527	22.164430

#### Note

##### Data Reference and source

- Agreement boundary data compiled by National Native Title Tribunal based on data sourced from the Department of Natural Resources and Mines (Qld) (February 2012).
- Native title determination application QUD6230/98 Jangga People (QC98/10) as accepted for registration on 19 October 2004.
- Cadastre data sourced from the Department of Natural Resources and Mines (Qld) (February 2012).

##### Reference datum

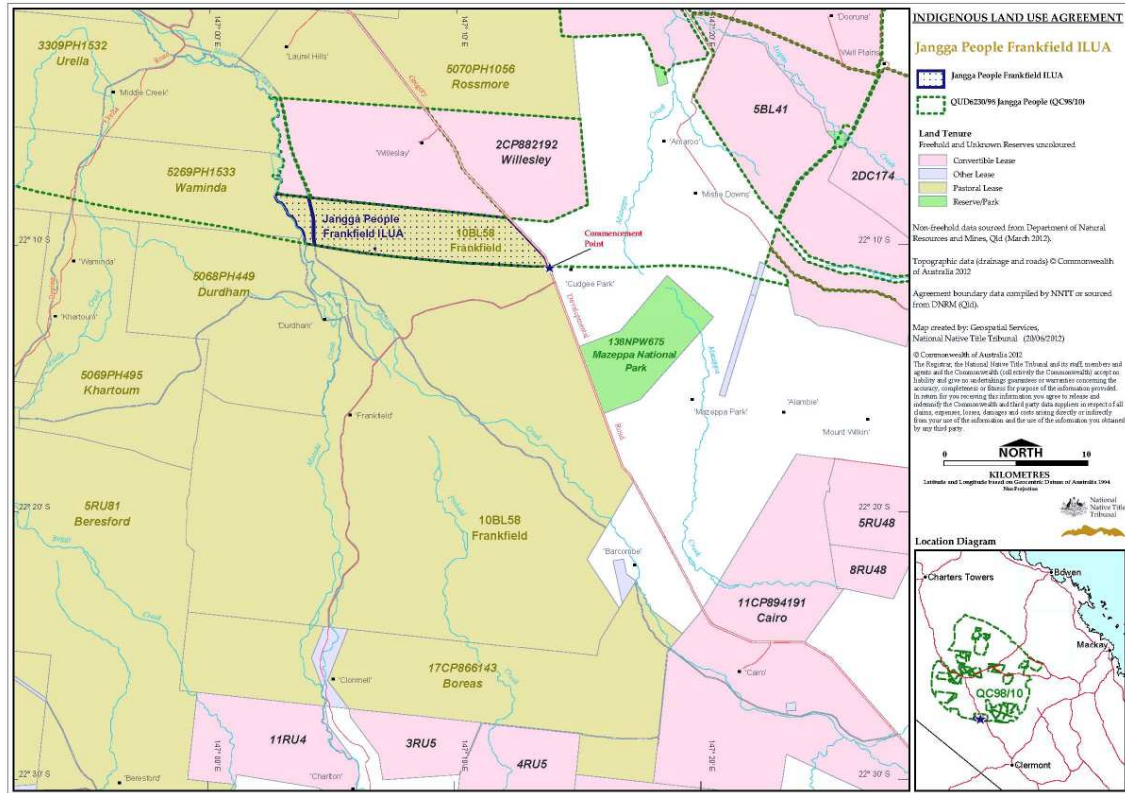
Geographical coordinates have been provided by the NNTT Geospatial Services and are referenced to the Geocentric Datum of Australia 1994 (GDA94), in decimal degrees and are based on the spatial reference data acquired from the various custodians at the time

**Use of Coordinates**

Where coordinates are used within the description to represent cadastral or topographical boundaries or the intersection with such, they are intended as a guide only. As an outcome to the custodians of cadastral and topographic data continuously recalculating the geographic position of their data based on improved survey and data maintenance procedures, it is not possible to accurately define such a position other than by detailed ground survey.

Prepared by Geospatial Services, National Native Title Tribunal (20 June 2012).

**B. Map**



**Item 3 Description of Lease**

Pastoral Holding 12/642 comprising Lot 10 on CP BL58 commonly known as Frankfield

**Item 4 Description of Lessee**

Frankfield Pastoral Company Pty Ltd ACN 109 310 741